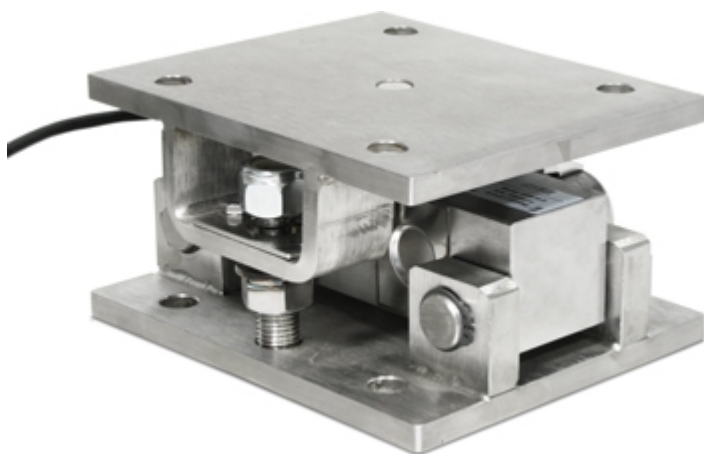


## KDSBN

### ASSEMBLY KITS FOR DOUBLE SHEAR BEAM LOAD CELLS



Mounting kits for DSBi double shear beam load cells: Accessories suitable for weighing hoppers, tanks, platforms, etc. etc. The special articulation guarantees an excellent measuring accuracy also in the presence of dilatations and/or bending of the weighing structure.

Working in cooperation with:

**VAHY ROBIN S.R.O.**

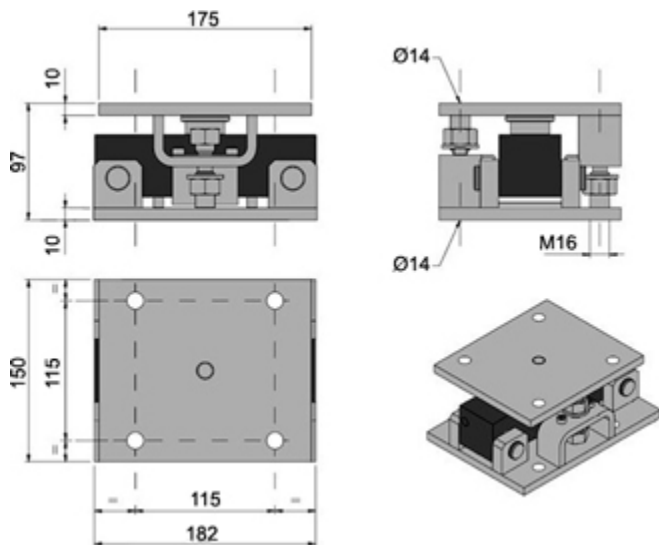
U SOKOLOVNY 115 - 66434 - MORAVSKE KNINICE  
Tel. 00420-777433576  
vahyrobin@seznam.cz

The best solution  
for advanced industrial  
applications

## MAIN FEATURES

- EXECUTION IN AISI304 STAINLESS STEEL
- GREAT RESISTANCE TO LATERAL FORCES
- BOLTS FOR MAINTAINING THE RAISED POSITION, FOR EASY INSTALLMENT AND/OR SUBSTITUTION OF THE LOAD CELL
- SELF-CENTERING CONNECTION SEGMENT BETWEEN LOWER AND UPPER PLATES.

## DETAIL 1



KDSBN: dimensions in mm



[www.diniargeo.com](http://www.diniargeo.com)



“YOUR WORLDWIDE PARTNER FOR WEIGHING,”

**DINI AR GEO**  
**FRANCE sarl**  
Nogent-sur-Marne

**DINI AR GEO**  
**GMBH**  
Sinsheim - Germany

**DINI AR GEO**  
**UK Ltd**  
Taunton - United Kingdom

**DINI AR GEO WEIGHING**  
**INSTRUMENTS Ltd**  
Shanghai - China

**DINI AR GEO**  
**WEIGHBRIDGES**  
Calto (RO) - Italy



**HEAD OFFICE**  
Via Della Fisica, 20  
41042 Spezzano di Fiorano Modena - Italy



**VAHY ROBIN S.R.O.**

U SOKOLOVNY 115 - 66434 - MORAVSKE KNINICE

Tel. 00420-777433576

[vahyrobin@seznam.cz](mailto:vahyrobin@seznam.cz)

**SALES AND TECHNICAL ASSISTANCE SERVICE**