

## CPX

### CPX SERIES LOW PROFILE LOAD CELLS



Stainless steel compression load cells suitable for weighing tanks and hoppers with the relevant accessories.

CAPACITIES (kg): 1000, 2500, 5000, 7500, 10000, 15000.

Stainless steel. IP68 protection. C4 precision class.

Working in cooperation with:

**VAHY ROBIN S.R.O.**

U SOKOLOVNY 115 - 66434 - MORAVSKE KNINICE  
Tel. 00420-777433576  
vahyrobin@seznam.cz

The best solution  
for advanced industrial  
applications

## MAIN FEATURES

- LOW PROFILE
- STAINLESS STEEL CONSTRUCTION
- IP68 PROTECTION
- MAX. CAPACITIES FROM 1000 TO 15000 kg
- SHIELDED CONNECTION CABLE
- CE-M C4 APPROVED (from 2500 to 10000 kg)

## TECHNICAL FEATURES

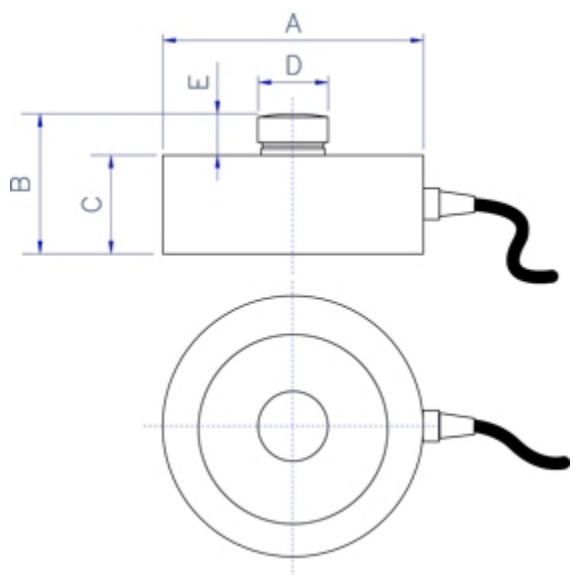
- Full Scale Output: 2mV/V +/- 0,5%
- Non-Repeatability: 0,01% F.S.
- Temperature effect on zero: 0,02% / 10°C
- Temperature effect on full scale output: 0,02% / 10°C
- Compensated Temperature Range: -10°C/+50°C
- Operating Temperature Range: -20°C/+60°C
- Creep error after 30 minutes: 0,02% F.S.
- Maximum tolerated excitation voltage: 10 VDC
- Input Resistance: 750 ± 10 Ohm
- Output Resistance: 700 ± 5 Ohm
- Zero Balance: +/-1% F.S.
- Insulation Resistance: >5000 MOhm
- Safe Overload: 120% F.S.
- 4-wire shielded cable, 5 mm diameter:
  - 5 m long for CPX 1000...5000 versions;
  - 10 m long for CPX 7500...15000 versions.

## ATEX VERSION

- The CCATEX certificate makes the load cell suitable for use in hazardous areas with protection methods according to:  
ATEX II 1G Ex ia IIC T6 (Ta -20÷+40°C) TX (Ta -20÷+65°C) Ga  
ATEX II 1D Ex ta IIIC TX°C (Ta -20÷+40°C) TX°C (Ta -20÷+65°C) Da IP65.  
The certificate includes the manual and the ATEX CE conformity declaration (available in EN, DE, FR, and IT).
- IMPORTANT: the certificate refers to the single load cell. For systems with more load cells, it is necessary to order one certificate for each load cell.

<u>Wiring Code</u>	
<u>Colour</u>	<u>Function</u>
--	SHIELD
GREEN	OUTPUT +
RED	INPUT +
WHITE	OUTPUT -
BLACK	INPUT -

## DETAIL 1



Code	Dimensions in mm				
	A	B	C	D	E
CPX1000	82	44	32	22	12
CPX2500	82	44	32	22	12
CPX5000	82	44	32	22	12
CPX7500	82	44	32	22	12
CPX10000	82	44	32	22	12
CPX15000	100	48,5	35	28	13,5

## VERSIONS

### Models Available

Code	Max (kg)
CPX1000	1000
CPX2500 € M	2500
CPX5000 € M	5000
CPX7500 € M	7500
CPX10000 € M	10000
CPX15000	15000



[www.diniargeo.com](http://www.diniargeo.com)



“YOUR WORLDWIDE PARTNER FOR WEIGHING,”

**DINI ARGEO**  
**FRANCE sarl**  
Nogent-sur-Marne

**DINI ARGEO**  
**GMBH**  
Sinsheim - Germany

**DINI ARGEO**  
**UK Ltd**  
Taunton - United Kingdom

**DINI ARGEO WEIGHING**  
**INSTRUMENTS Ltd**  
Shanghai - China

**DINI ARGEO**  
**WEIGHBRIDGES**  
Calto (RO) – Italy



**HEAD OFFICE**  
Via Della Fisica, 20  
41042 Spezzano di Fiorano Modena - Italy



***VAHY ROBIN S.R.O.***

*U SOKOLOVNY 115 - 66434 - MORAVSKE KNINICE*

*Tel. 00420-777433576*

*vahyrobin@seznam.cz*

**SALES AND TECHNICAL ASSISTANCE SERVICE**