

KCPN

ASSEMBLY KITS FOR COMPRESSION LOAD CELLS



Assembly kits for CP compression cells: stainless steel accessories designed for weighing silos, tanks, hoppers. It is advisable to install the weighing system using just the accessory without the cell.

Working in cooperation with:

VAHY ROBIN S.R.O.

U SOKOLOVNY 115 - 66434 - MORAVSKE KNINICE
Tel. 00420-777433576
vahyrobín@seznam.cz

The best solution
for advanced industrial
applications

MAIN FEATURES

- EXECUTION IN AISI304 STAINLESS STEEL
- GREAT RESISTANCE TO LATERAL FORCES
- OVERTURN-PROOF SCREW JACKS FOR EASY INSTALLMENT AND/OR SUBSTITUTION OF THE LOAD CELL
- SELF-CENTERING CONNECTION SEGMENT BETWEEN LOWER AND UPPER PLATES.

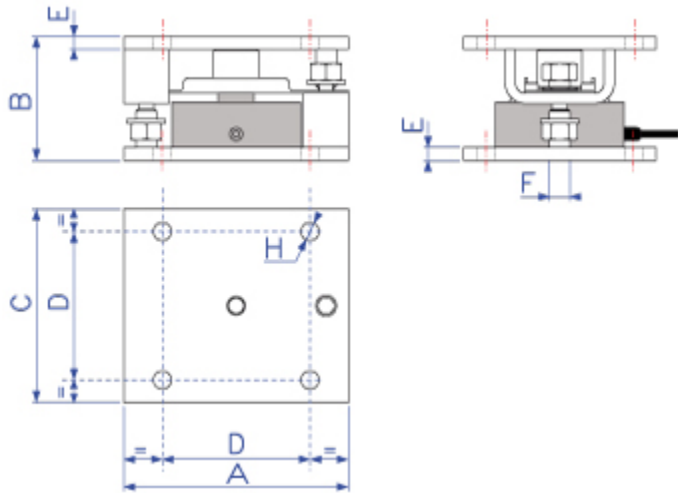


ATTENTION



- The KCPN kit is designed for allowing the correct functioning of the cells and for obtaining the requested weighing accuracy, but does not give protection to the cell and neither to the structure.
- The system designer and installer is obliged to search for the best solutions against lateral forces, capsizing, and overload taking into consideration the:
 - knocks and vibrations;
 - wind shear;
 - sysmic classification of the installation area;
 - support base consistence.

DETAIL 1



Code	Dimensions in mm						
	A	B	C	D	E	F	H
KCPN10	175	96	150	115	10	M16	ø14
KCPN15	175	96	150	115	10	M16	ø14
KCPN30	230	118	200	160	10	M20	ø17
KCPN100	320	154	320	250	15	M30	ø23



www.diniargeo.com



DINI AR GEO
FRANCE sarl
Nogent-sur-Marne

DINI AR GEO
GMBH
Sinsheim - Germany

DINI AR GEO
UK Ltd
Taunton - United Kingdom

DINI AR GEO WEIGHING
INSTRUMENTS Ltd
Shanghai - China

DINI AR GEO
WEIGHBRIDGES
Calto (RO) - Italy



HEAD OFFICE
Via Della Fisica, 20
41042 Spezzano di Fiorano Modena - Italy



VAHY ROBIN S.R.O.

U SOKOLOVNY 115 - 66434 - MORAVSKE KNINICE

Tel. 00420-777433576

vahyrobin@seznam.cz

SALES AND TECHNICAL ASSISTANCE SERVICE