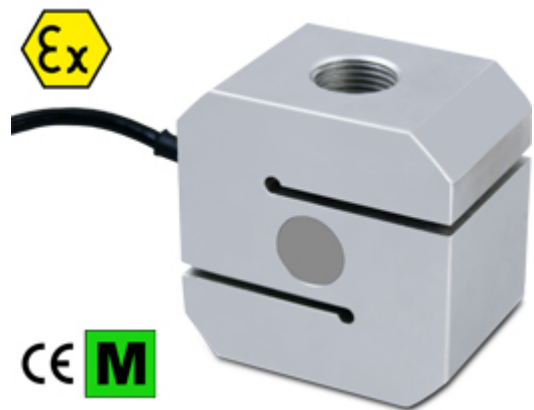


STFC

STFC SERIES TENSION LOAD CELLS



Tension load cells CE-M approved for suspended weighing of hoppers, tanks, etc.

CAPACITIES (kg): 2000, 5000, 10000.

Nickel-plated steel. IP67 protection. C3 precision class.

Working in cooperation with:

VAHY ROBIN S.R.O.

U SOKOLOVNY 115 - 66434 - MORAVSKE KNINICE
Tel. 00420-777433576
vahyrobin@seznam.cz

The best solution
for advanced industrial
applications

MAIN FEATURES

- C3 PRECISION CLASS
- NICKEL-PLATED STEEL CONSTRUCTION
- IP67 PROTECTION LEVEL
- MAX. CAPACITIES FROM 2000 TO 10000 kg
- SHIELDED CONNECTION CABLE
- TEST CERTIFICATE AVAILABLE UPON REQUEST

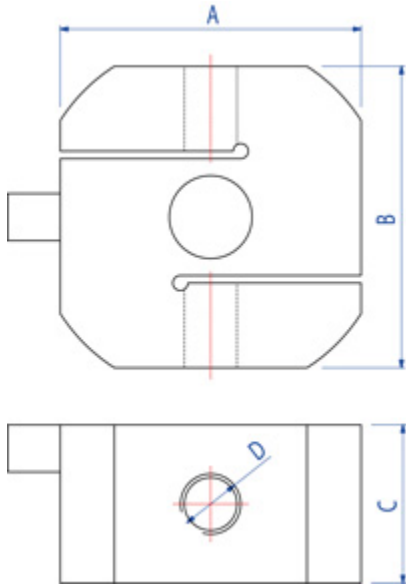
TECHNICAL FEATURES

- Minimum load cell verification interval: $V_{min} = E_{Max} / 10.000$
- Maximum number of verification intervals: $n_{LC} = 3000$
- Combined error: 0,02% of Full Scale Output (F.S.)
- Full Scale Output: $2mV/V \pm 0,1\%$
- Temperature effect on zero: $0,0013\% / ^\circ C$
- Temperature effect on full scale output: $0,0014\% / ^\circ C$
- Compensated Temperature Range: $-10^\circ C / +40^\circ C$
- Operating Temperature Range: $-20^\circ C / +60^\circ C$
- Creep error after 4 hours: 0,03% F.S.
- Maximum tolerated excitation voltage: 10 VDC
- Input Resistance: 1100 Ohm
- Output Resistance: 1000 Ohm
- Zero balance: $\pm 1\%$ F.S.
- Insulation Resistance: >5000 MOhm
- Safe Overload: 150% F.S.
- Ultimate Overload: 300% F.S.
- 4-wire shielded cable, 5m long, 5mm diameter

ATEX VERSION

- The CCATEX certificate makes the load cell suitable for use in hazardous areas with protection methods according to:
ATEX II 1G Ex ia IIC T6 (Ta $-20 \div +40^\circ C$) TX (Ta $-20 \div +65^\circ C$) Ga
ATEX II 1D Ex ta IIIC TX $^\circ C$ (Ta $-20 \div +40^\circ C$) TX $^\circ C$ (Ta $-20 \div +65^\circ C$) Da IP65.
The certificate includes the manual and the ATEX CE conformity declaration (available in EN, DE, FR, and IT).
- **IMPORTANT:** the certificate refers to the single load cell. For systems with more load cells, it is necessary to order one certificate for each load cell.

DETAIL 1



Code	Dimensions in mm			
	A	B	C	D
STFC2000	80	80	42	M16
STFC5000	80	80	42	M24x2
STFC10000	80	80	52	M24x2

Wiring Code	
<i>Colour</i>	<i>Function</i>
--	SHIELD
GREEN	OUTPUT +
RED	INPUT +
WHITE	OUTPUT -
BLACK	INPUT -

VERSIONS

Available versions

Code	Max (kg)	Masterpack 4 pcs
STFC2000	2000	STFC2000C
STFC5000	5000	STFC5000C
STFC10000	10000	STFC10000C



www.diniargeo.com



“YOUR WORLDWIDE PARTNER FOR WEIGHING,”

DINI ARGEO
FRANCE sarl
Nogent-sur-Marne

DINI ARGEO
GMBH
Sinsheim - Germany

DINI ARGEO
UK Ltd
Taunton - United Kingdom

DINI ARGEO WEIGHING
INSTRUMENTS Ltd
Shanghai - China

DINI ARGEO
WEIGHBRIDGES
Calto (RO) - Italy



HEAD OFFICE
Via Della Fisica, 20
41042 Spezzano di Fiorano - Modena - Italy



VAHY ROBIN S.R.O.

U SOKOLOVNY 115 - 66434 - MORAVSKE KNINICE

Tel. 00420-777433576

vahyrobin@seznam.cz

SALES AND TECHNICAL ASSISTANCE SERVICE