



Short Description



- Stainless steel IP67, “S” type load cell
- Tension and compression applications
- Suitable for hanging, hopper and other weighing devices
- Also available in imperial capacities and dimensions



Test certificate no. D09-06.07
C of C no R60/2000-CNI-06.02



Certificate no. 06-099A1

Available Models

| Capacity | Accuracy | Full article description |
|----------|----------|--------------------------|
| 50kg | C3 | B3G-C3-50kg-6B |
| 100kg | C3 | B3G-C3-100kg-6B |
| 250kg | C3 | B3G-C3-250kg-6B |
| 500kg | C3 | B3G-C3-500kg-6B |
| 1t | C3 | B3G-C3-1t-6B |
| 2.5t | C3 | B3G-C3-2.5t-6B |
| 5t | C3 | B3G-C3-5t-6B |
| 7.5t | C3 | B3G-C3-7.5t-6B |
| 10t | C3 | B3G-C3-10t-6B |

Specifications and dimensions are subject to change without notice and do not constitute any liability whatsoever.

Technical Specifications B3G

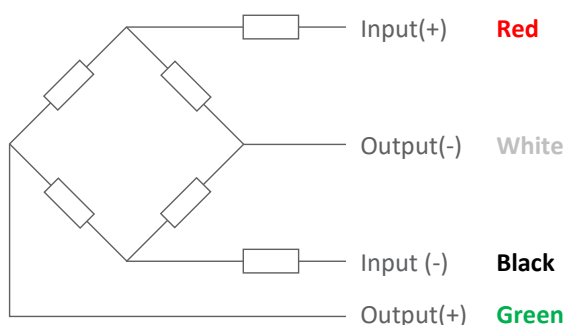
| | | | | | |
|---|-------------------------|---------------------|----------------------|-------------------|------------------|
| Accuracy Class | | OIML R60 C3 | | | |
| Output Sensitivity (= FS) | mV/V | 3.0 ± 0.008 | | | |
| Maximum Capacity (E _{max}) | t | 0.05, 0.1 | 0.25, 0.5, 1, 2.5 | 5, 7.5, 10 | |
| Max. Number of Load Cell Intervals | n _{LC} | 3000 | | | |
| Ratio of min. LC Verification Interval | $Y = E_{max} / V_{min}$ | 7000 | 10000 | 12000 | |
| Combined Error | %FS | ≤± 0.020 | | | |
| Creep Error (30 minutes) | %FS | ≤± 0.016 | | | |
| Temperature Effect on Zero (ZTC) | %FS/10°C | ≤± 0.015 | | | |
| Temperature Effect on Sensitivity (STC) | %FS/10°C | ≤± 0.011 | | | |
| Zero Balance | %FS | ≤± 1.0 | | | |
| Safe Overload | %FS | 150 | | | |
| Ultimate Overload | %FS | 300 | | | |
| Maximum Deflection | mm | 0.1935 ~ 0.4079 | | | |
| Excitation, Recommended Voltage | V | 5 ~ 12 | | | |
| Excitation, Maximum Voltage | V | 18 | | | |
| Input Resistance | Ω | 430 ± 50 | | | |
| Output Resistance | Ω | 351 ± 2 | | | |
| Insulation Resistance (50V) | MΩ | ≥5000 | | | |
| Compensated Temperature | °C | -10 ~ + 40 | | | |
| Operating Temperature | °C | -35 ~ + 65 | | | |
| Storage Temperature | °C | -40 ~ + 70 | | | |
| Load Cell Weight | kg | 0.05t – 1t: 0.5-0.8 | 2.5t-5t: ~1.5 | 7.5t: 3.1 | 10t: 5.6 |
| Element Material | | Stainless Steel | | | |
| Ingress Protection (acc. to EN 60529) | | IP67 | | | |
| Recommended Torque on Fixation Bolts | Nm | M8:25 | M12:75 | M20:450 | M24:750 M30:1450 |
| ATEX classification (optional) | | II1G Ex ia II1C T4 | II1D Ex iaD 20 T73°C | II3G Ex nL IIC T4 | |

Wiring

Features:

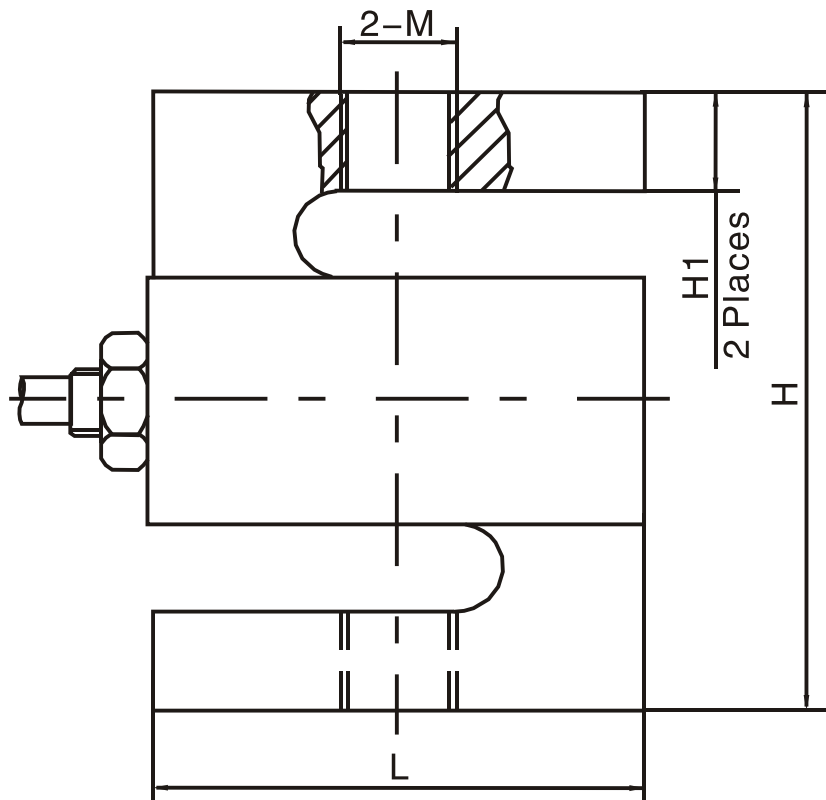
Cable type: Shielded, 4 conductor cable , conductor AWG 22
 Cable diameter: Ø 5.0mm
 Cable length: 6m
 Cable jacket: Polyurethane
 Shield not connected to element

4-Wire Connection Diagram

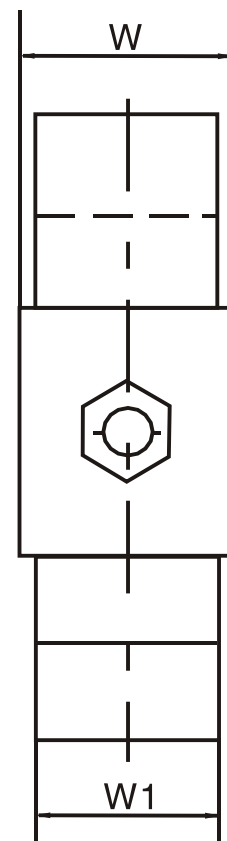


Dimensions in mm

Front View

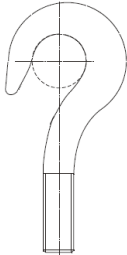
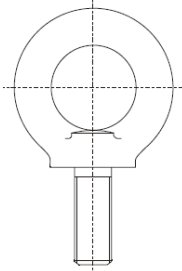
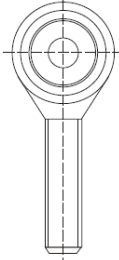
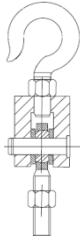
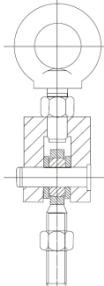


Side View



| Dimension Capacity | L | H | H1 | W1 | W | M |
|--------------------|--------|-------|-------|-------|-------|-----------|
| 50-100kg | 50.8 | 60.96 | 8.89 | 11.68 | 15.06 | M8 |
| 250-500kg | 50.8 | 60.96 | 8.89 | 18.03 | 21.41 | M12 |
| 1t | 50.8 | 60.96 | 8.89 | 24.38 | 27.76 | M12 |
| 2.5t | 76.2 | 99.06 | 13.97 | 24.38 | 27.76 | M20 x 1.5 |
| 5t | 74.68 | 99.06 | 18.37 | 30.74 | 34.12 | M20 x 1.5 |
| 7.5t | 87.38 | 139.7 | 27.5 | 37.08 | 40.46 | M24 x 2 |
| 10t | 112.78 | 177.8 | 39.9 | 42.93 | 46.31 | M30 x 2 |

Available accessories

| | |
|---|---|
| <p>HL-3-001-25kg-5t hook</p> <ul style="list-style-type: none"> • Alloy Steel • Suitable for hybrid scales, crane scales, packaging scales and hopper scales |  |
| <p>HL-3-002-25kg-5t eye</p> <ul style="list-style-type: none"> • Alloy Steel • Suitable for hybrid scales, crane scales, packaging scales and hopper scales |  |
| <p>HL-3-003-25kg-5t rod end</p> <ul style="list-style-type: none"> • Alloy Steel • Suitable for hybrid scales, crane scales, packaging scales, hopper scales and other electronic weighing devices |  |
| <p>HL-3-004-25kg-5t hook assembly</p> <ul style="list-style-type: none"> • Alloy Steel • Suitable for hybrid scales, crane scales, packaging scales, hopper scales and other electronic weighing devices |  |
| <p>HL-3-005-25kg-5t eye assembly</p> <ul style="list-style-type: none"> • Alloy Steel • Suitable for hybrid scales, crane scales, packaging scales, hopper scales and other electronic weighing devices |  |